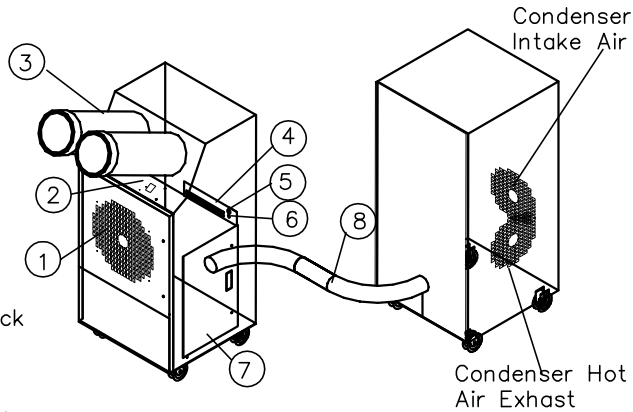


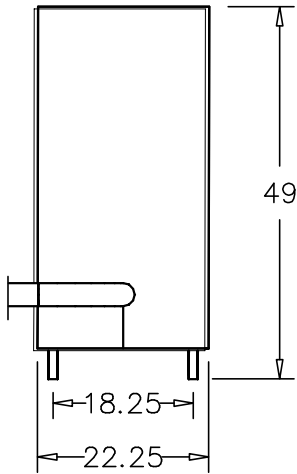
# SPLAC4221

- 1 Return Air
- 2 Control pad
- 3 Cold Air Supply
- 4 Power Cord
- 5 Condensate Nipple
- 6 Condensate Alarm Jack
- 7 Access Door
- 8 Flexible Cable Connector (3"Ø x 20')

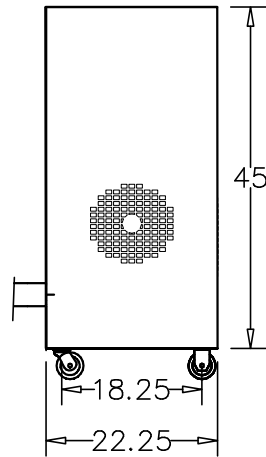


Isometric View

CONDENSER UNIT

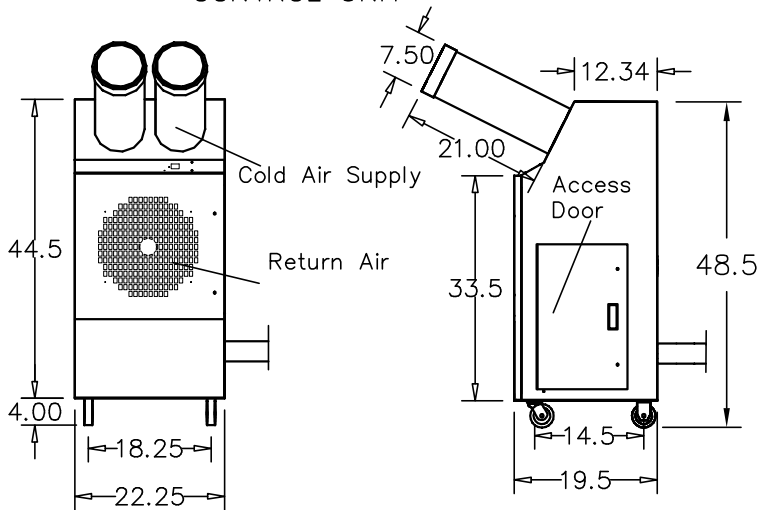


Front View



Right View

CONTROL UNIT



Front View

Right View



ETL LISTED CONFORMS TO ANSI/UL  
1995 CERTIFIED TO CAN/CSAA22.2 NO.235

# KwikKool

## 1-800-KWIKOOL

# SPECIFICATIONS

## Model SPLAC4221 - 3.5 Ton

| COOLING CAPACITY                  |                                 |                            |
|-----------------------------------|---------------------------------|----------------------------|
| BTU/hr @ 95 F at 60%RH            |                                 | 42000 (3-1/2 TONS)         |
| COMPRESSOR DATA                   |                                 |                            |
| Compressor Type                   |                                 | HERMETIC ROTARY            |
| Operating Temperatures            |                                 | 60-110 F .50%RH            |
| Refrigerant                       |                                 | R-22                       |
| FAN DATA                          |                                 |                            |
| EVAPORATOR                        |                                 |                            |
| Fan Type (Centrifugal)            |                                 | DIRECT DRIVE               |
| Air Flow (CFM)                    |                                 | 1400/3 Speed               |
| Supply Air Chute Data             |                                 | 2-8" Dia. x 21" Length     |
| Supply Air Chute Max. Length      |                                 | 35'                        |
| Motor HP                          |                                 | 1/2                        |
| CONDENSER                         |                                 |                            |
| I/O Intergral Condenser - In/Out  |                                 | BALANCED AIR FLOW          |
| Fan Type (Centrifugal)            |                                 | DIRECT DRIVE               |
| Air Flow (CFM)                    |                                 | 2100                       |
| Condenser Exhaust Duct (Optional) |                                 | 1-18" Dia. x 8' Length     |
| Condenser Duct Max. Length        |                                 | 50'                        |
| Motor HP                          |                                 | 2                          |
| ELECTRICAL DATA                   |                                 |                            |
| Power Supply (Volts)              |                                 | 208/230-Single Phase       |
| Current Consumption (Amps)        |                                 | 37.2/22.75                 |
| Power Consumption (KW)            |                                 | 6.5                        |
| Maximum Circuit Breaker (Amps)    |                                 | 40                         |
| Minimum Circuit Ampacity (Amps)   |                                 | 34.25                      |
| Min/Max Voltage                   |                                 | 195-225/210-250            |
| Power Cord Gauge/Length           |                                 | 10 AWG/10                  |
| Plug Configuration                |                                 | FIELD SUPPLIED             |
| DIMENSIONAL DATA                  |                                 |                            |
| SPLAC Model (Master)              | Width x Depth x Height (Inches) | 22.25X19.5X48.5            |
| (Slave)                           | Width x Depth x Height (Inches) | 22.25X22.25X49             |
|                                   | Weight (Lbs.)                   | 501                        |
|                                   | Shipping Weight (Lbs.)          | 601                        |
| SAFETY DEVICE DATA                |                                 |                            |
| Compressor Overload               |                                 | INTERNAL                   |
| Fan Motor Overload                |                                 | AUTOMATIC INTERNAL         |
| Evaporator Freeze-up              |                                 | HOT GAS BYPASS             |
| High Pressure Switch              |                                 | MANUAL                     |
| Low Pressure Switch               |                                 | AUTOMATIC                  |
| Compressor Short Cycle            |                                 | YES                        |
| Automatic Restart                 |                                 | YES                        |
| Thermostat                        |                                 | MICROPROCESSOR/<br>DIGITAL |
| Condensate Pump w 20' Head Pres.  |                                 | YES                        |
| Condensate Pump Overflow          |                                 | YES                        |
| Condensate Tank Overflow          |                                 | YES                        |



**1-800-KWIKOOL**